



The
PARKER

LIVE THE
moment

MODERN APARTMENTS
LEASING NOW



5935 W Pico Blvd
Los Angeles, CA 90035
THEPARKERLA.COM



**LIVE YOUR PASSION.
LIVE THE MOMENT.
LIVE ON PICO.**

In these modern studio, 1 and 2 bedroom apartments discover a community dedicated to seeking the beauty in every moment. At the heart of L.A. arts and culture, inspiration is right outside your door. Surrounded by creative, passionate people making their mark on the city, it's time to live in full color.

DYNAMIC SPACES FOR INSPIRATION & COLLABORATION

expansive social spaces

THE OASIS

lush garden courtyard

THE FIT STUDIO

expansive fitness center

THE FIT YARD

fitness deck with rock climbing wall

THE VISTA

open air lounge with city views

PET PARK & SPA

pet playground

THE SPLASH

rooftop pool and spa

THE CINEMA

outdoor movie theater

THE CLUB

open air dining and KBBQs

CV WORKS

tech enabled coworking space

COMMUNITY AMENITIES

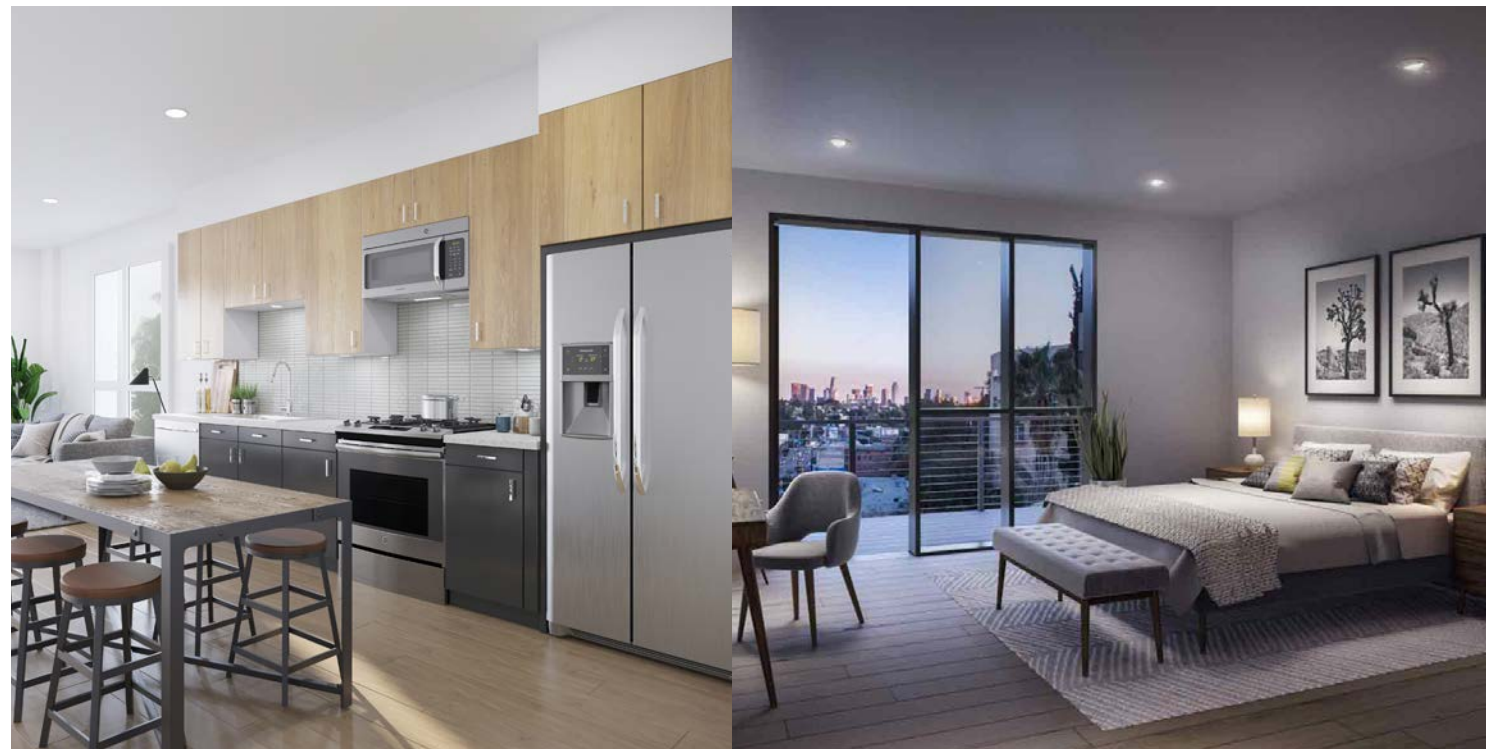
- Pet friendly community
- Controlled access community
- Controlled access below ground parking
- Covered bike storage
- EV charging stations
- Parcel room



Take in the sunset, connect with friends, or take a moment to reflect. These curated spaces are designed to keep your vision clear.

MODERN STUDIO, 1 & 2 BEDROOM RESIDENCES

With contemporary design and light filled spaces, step into a community dedicated to living artfully. Sweeping views, all new appliances and secure covered parking help make everyday beautiful.

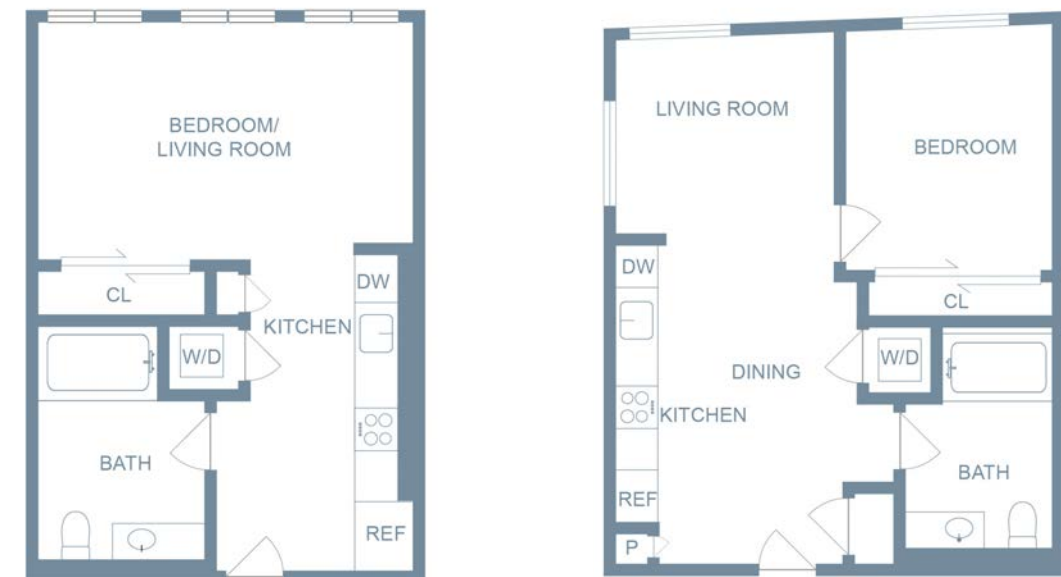


- FULLY EQUIPPED STAINLESS STEEL APPLIANCES
- FULL SIZE IN-UNIT WASHER AND DRYER
- NEST THERMOSTATS AND KEYLESS ENTRY
- PRIVATE BALCONIES IN SOME UNITS
- QUARTZ COUNTERTOPS AND WOOD STYLE FLOORING
- EUROPEAN STYLE CABINETRY
- LARGE WINDOWS AND SWEEPING VIEWS
- POSH BATHROOMS WITH PORCELAIN TILE
- FIBER OPTIC HIGH SPEED INTERNET CONNECTION

SEEK BEAUTY.
DREAM BIG.
LIVE VIBRANTLY.

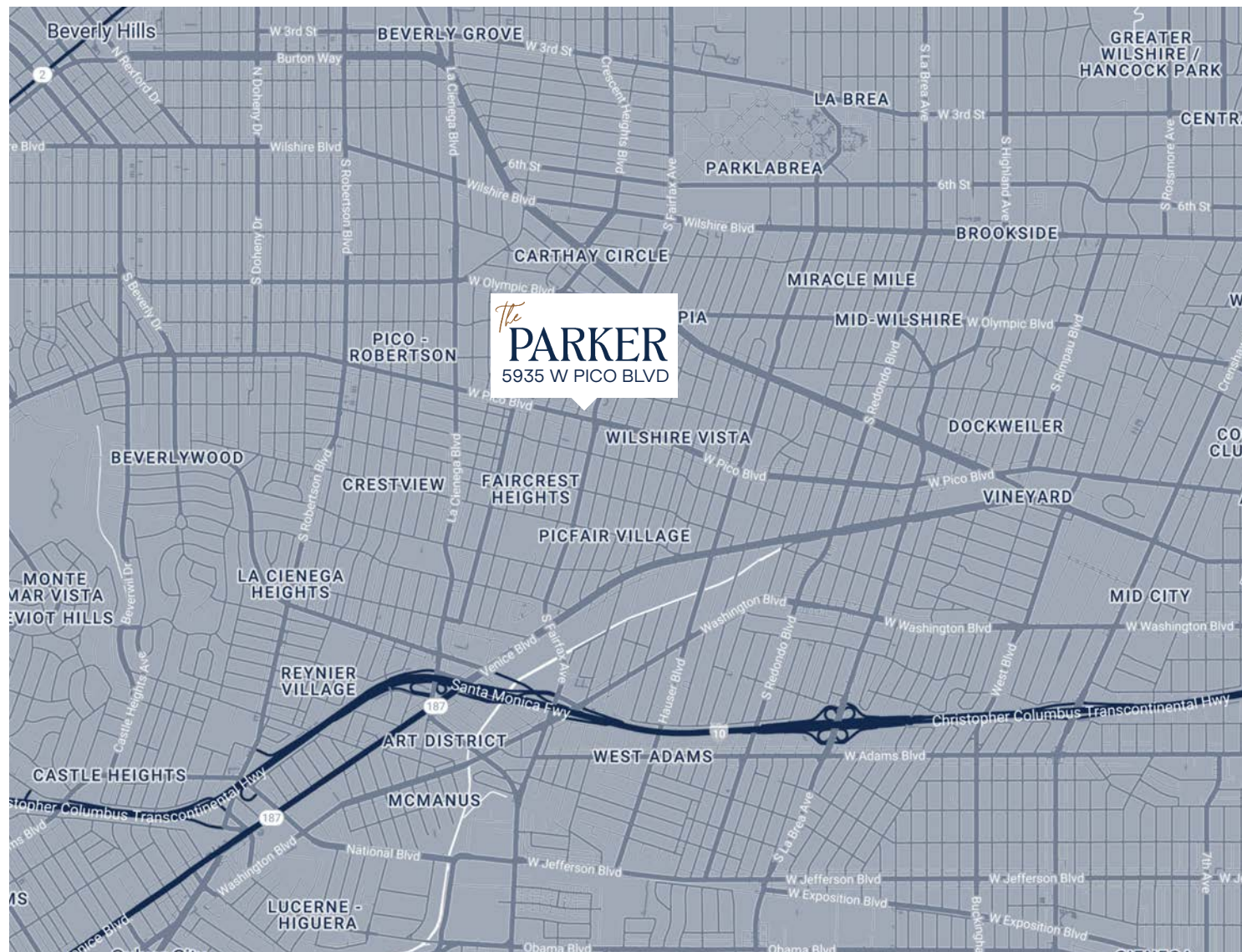
UNIT TYPE	SF RANGE
STUDIOS	452 TO 477 SF
ONE BEDROOMS	576 TO 722 SF
TWO BEDROOMS	973 TO 1110 SF

Sample set of our floor plan offerings



THE HEART OF LA CREATIVITY

This walkable neighborhood is central to everything, and a hub for some of LA's best offerings. Whether it's award-winning restaurants, world-famous museums, or iconic music venues, our community sits at the intersection of incredible potential.



9:00am



1:00pm



6:00pm



9:00pm

LIVE IN FULL COLOR

MORNING

Start the day with a rock climbing session on the open-air fitness deck, or enjoy your coffee in the lush garden courtyard.

EVENING

Fire up the grill with friends on the rooftop dining deck, or head out to explore the incredible dining scene nearby. Ethiopian, anyone?

AFTERNOON

Set up in the resident coworking space, surrounded by other creative minds. When you need some inspiration, head over to LACMA for a visual feast.

NIGHT

Take a late night swim in the rooftop pool, then relax with a cocktail and enjoy epic views of the city. Get ready to do it all over again.



NEW RESIDENCES
NOW LEASING

The
PARKER

DISCOVER MORE AT [THEPARKERLA.COM](https://www.theparkerla.com)

5935 W Pico Blvd Los Angeles, CA 90035

INFO@THEPARKERLA.COM

[THEPARKERLA.COM](https://www.theparkerla.com)